

Project Management

Christian Woodside,
Manager of Project Execution

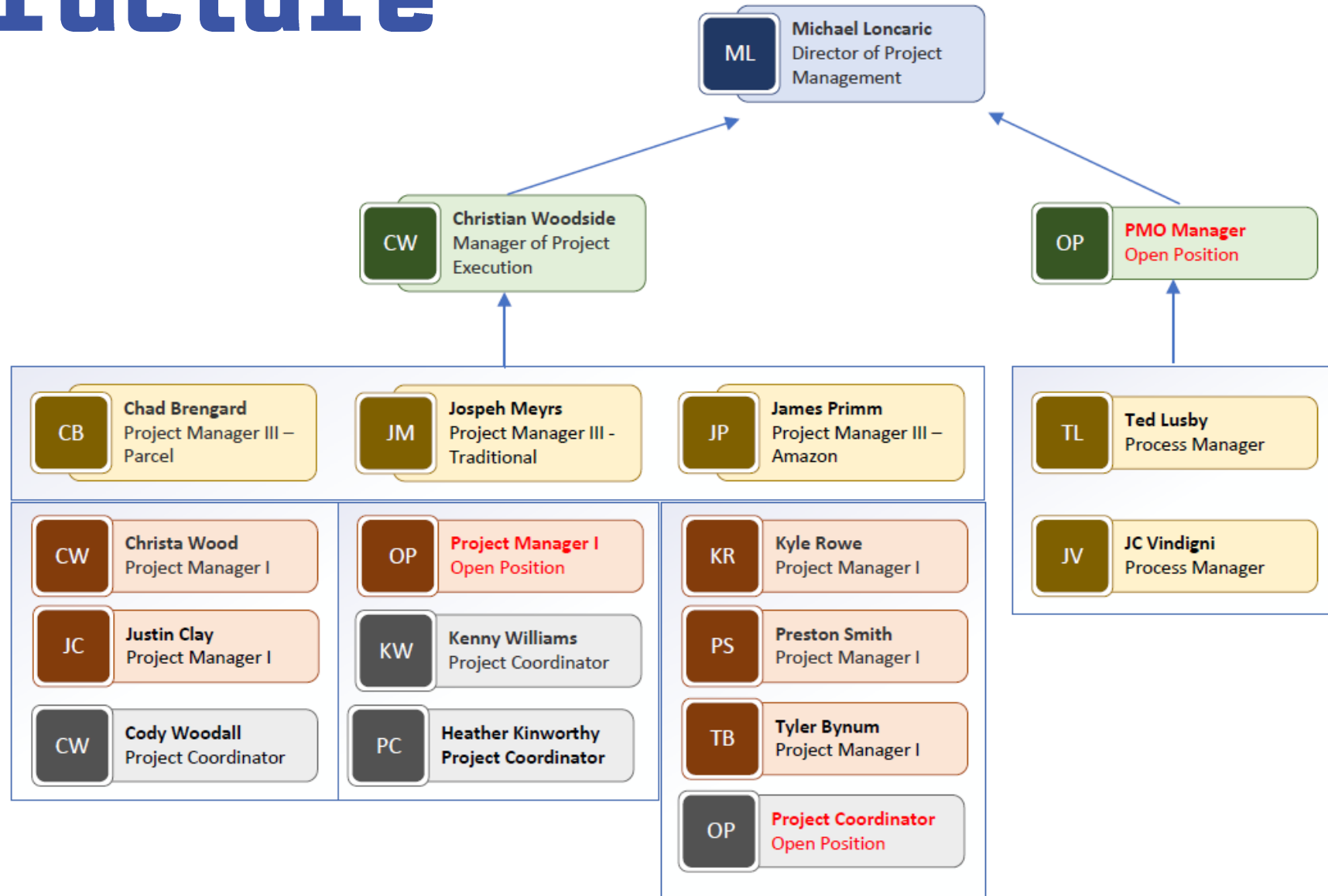
Introduction

- Benefit of Hytrol Project Management
- Project Management Structure
- Firm Engineering Requirements
- Firm Engineering Timeline
- Project Management Process Improvement

Benefit of Hytrol Project Management

- What do you get with Project Management?
 - Dedicated Project Manager & Coordinator for your project.
 - Enhanced reporting and insight to the progression of your project.
 - A team with ongoing knowledge of your project to help remove obstacles that arise while your order is both in Hytrol and installing.
 - Conveyor experts you can reach via email, call, or text to aid with Eng/Design/Sched/Shipping & Installation processes.

PM Structure



Firm Engineering

- How does Hytrol define Firm Engineering?
 - Receipt of a valid and FINAL PO.
 - Any special quotes or agreements must be submitted to Hytrol from the IP with PO.
 - **System Layout is complete in HYCAD and approved by End User.**
 - All conveyor lengths and widths are determined and approved.
 - Conveyor models are selected and approved.
 - All elevations are determined and approved.
 - Speed and Throughput are all set and approved.
 - Network Controls requirements are determined and approved.
- Once Firm Engineering is approved and we have a Processable Order, Hytrol and IP can begin the process of entering the order and confirming shipping sequence and schedule.

Firm Engineering Timeline

• Traditional Orders



• Parcel Orders



PM Process Improvement

- Standardized Scope of Work
- Project Playbook
- Shared Change Order Logs
- Development of tools for Risk Management.
 - Why: We want to be good partners, as we ask for requirements from Integrator network. Our most common feedback from the network 1) timeliness of communication regarding any issues/delays and 2) availability of information.
 - Who: Process Managers, PMO, Manager of Project Execution, Director
 - What: Creating flags for Project Management to predict issues like date slips, purchase part commitment issues, and PO misalignments.
 - When: Currently in testing (October Launch Date)
 - Where: TBD – Pending Integrator Feedback and Internal Capabilities (external access)
 - How: Power BI

QUESTIONS?